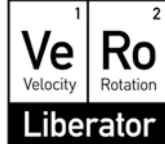




5. Barite ore from Clara Mine, Black Forest, Germany

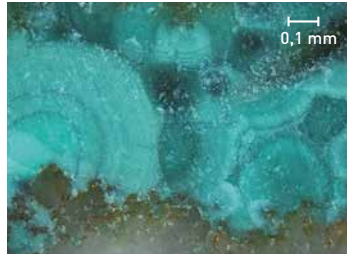
[Sachtleben GmbH & Co. KG]



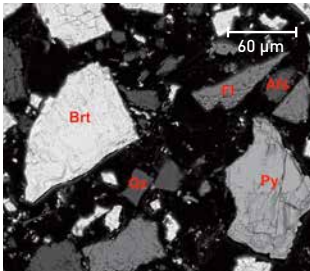
Input



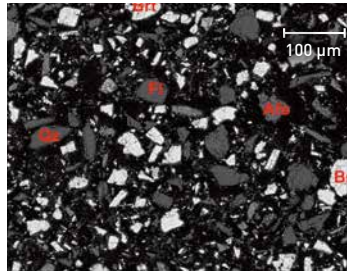
Input (optical microscopy)



Output after one pass comminution
(SEM image)



Output after one pass comminution
(SEM image)



Summary (after one pass comminution):

- Valuable minerals of both ore types (barite & fluorite) are completely liberated.
- For both ore types, 90% of the fragmentation products show, after implementation of a single pass through the VeRo Liberator®, particles that are sized ≤ 1 mm.
- Almost 70% of the bulk mass is in the grain size range ≤ 250 μm .

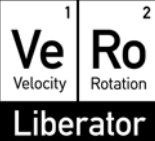
Extracted from original factsheet dated Aug. 29, 2013. Contact us for more details.



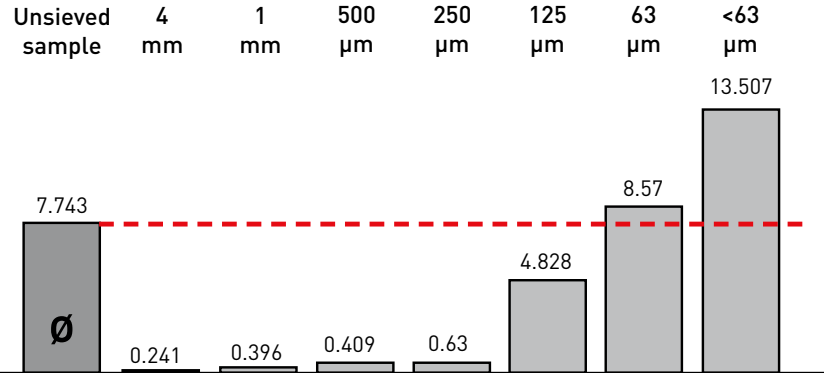
In cooperation with
MARTIN-LUTHER-UNIVERSITÄT
HALLE-WITTENBERG

Barite ore from Clara Mine, Black Forest, Germany

[Sachtleben GmbH & Co. KG]



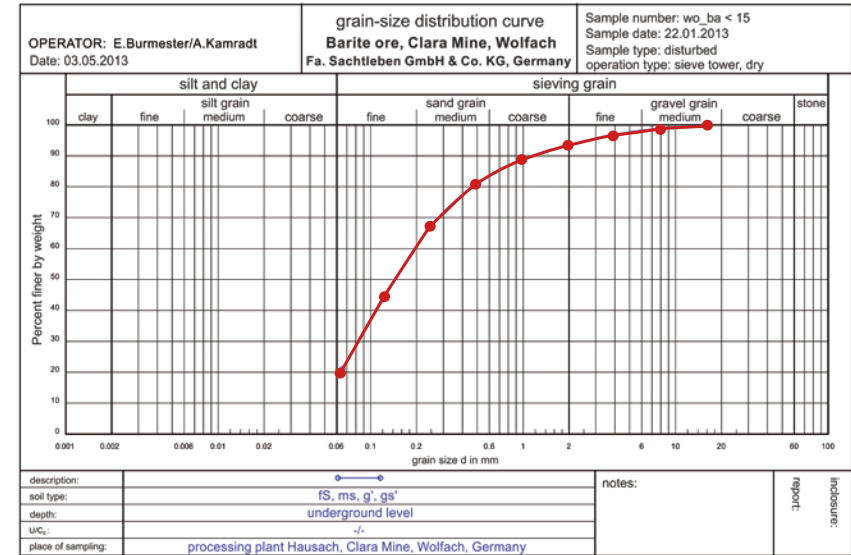
Ba content [%]*



Other metals (unsieved sample)

Ca	6.386%	Sr	0.417%	Sb	0.043%
Fe	0.977%	Cu	0.404%	Zn	0.017%
K	0.583%	As	0.074%	Pb	0.015%

Sieve analysis



* Point measurements of inhomogeneous ore by mobile XRF Scanner