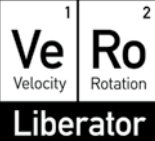




Fluorite ore from Clara Mine, Black Forest, Germany

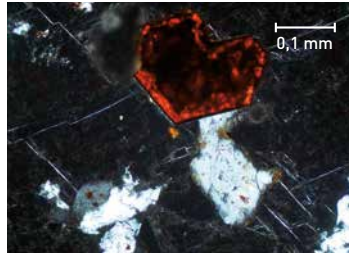
(Sachtleben GmbH & Co. KG)



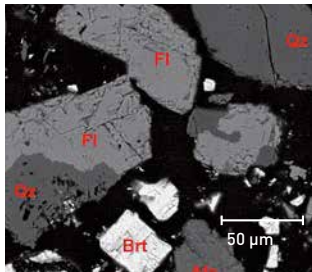
Input



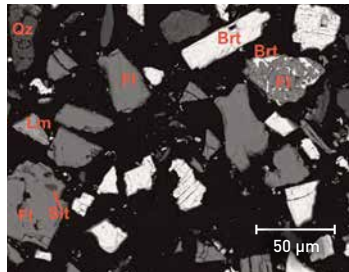
Input (optical microscopy)



Output after one pass comminution
(SEM image)



Output after one pass comminution
(SEM image)



Summary (after one pass comminution):

- Valuable minerals of both ore types (barite & fluorite) could be completely liberated.
- For both ore types, 90% of the fragmentation products show, after implementation of a single pass through the VeRo Liberator®, particles that are sized ≤ 1 mm.
- Almost 70% of the bulk mass is in the grain size range ≤ 250 μm .

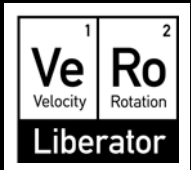
Extracted from original factsheet dated Dec 26th, 2013. Contact us for more details.



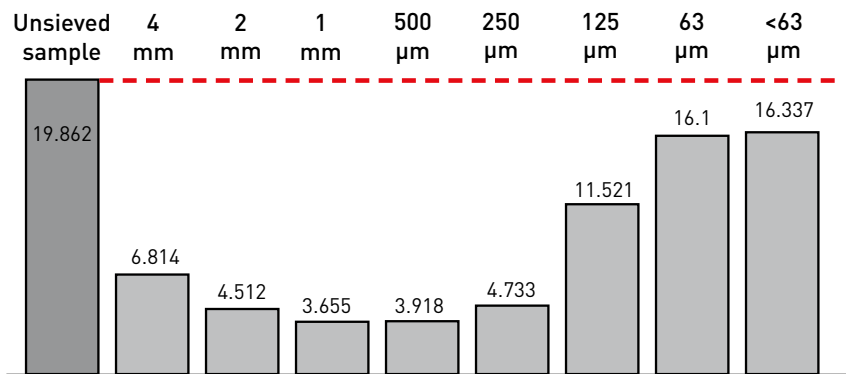
In cooperation with
MARTIN-LUTHER-UNIVERSITÄT
HALLE-WITTENBERG

Fluorite ore from Clara Mine, Black Forest, Germany

[Sachtleben GmbH & Co. KG]



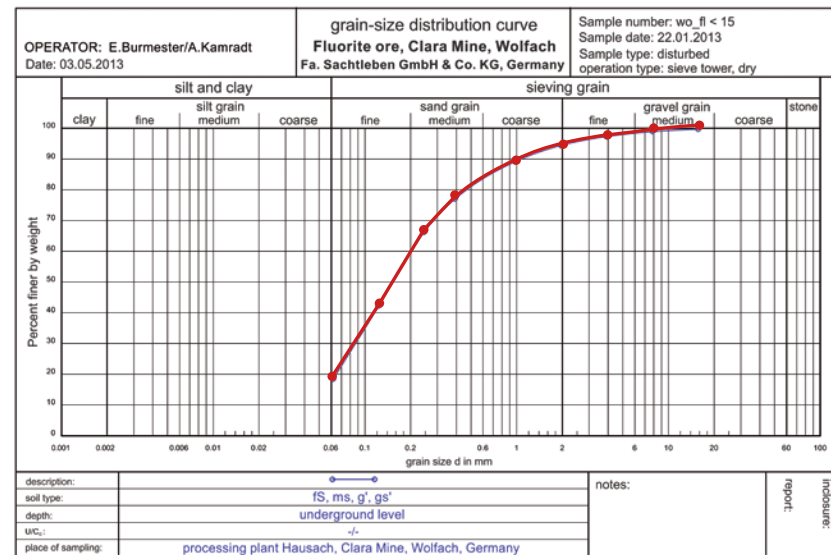
Ca content [%]*



Other metals (unsieved sample)

Ba	4.039%	Cu	0.068%
Fe	0.731%	As	0.014%
K	0.622%	Pb	0.004%
Sr	0.187%		

Sieve analysis



* Point measurements of inhomogeneous ore by mobile XRF Scanner