

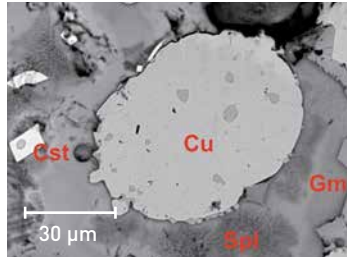


Anode smelter Cu slag from copper smelter, Aurubis AG, Lünen, Germany

Input



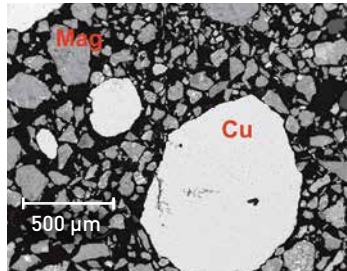
Input (SEM image)



Output after one pass comminution



Output after one pass comminution (SEM image)



Summary (after one pass comminution):

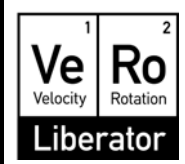
- Copper particles in the grain size range $> 125 \mu\text{m}$ are virtually fully liberated.
- Since 65% of the fragmentation product consists of particles $\geq 125 \mu\text{m}$, the proportion of exposed, native copper in the larger grain size fractions is very high.
- Enhanced concentration of copper occurs in the larger grain size ranges $\geq 250 \mu\text{m}$.

Extracted from original factsheet dated Nov. 25, 2013. Contact us for more details.

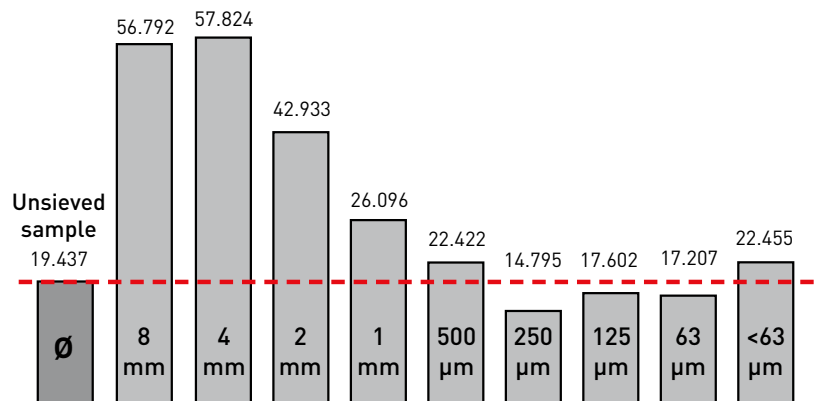


In cooperation with
MARTIN-LUTHER-UNIVERSITÄT
HALLE-WITTENBERG

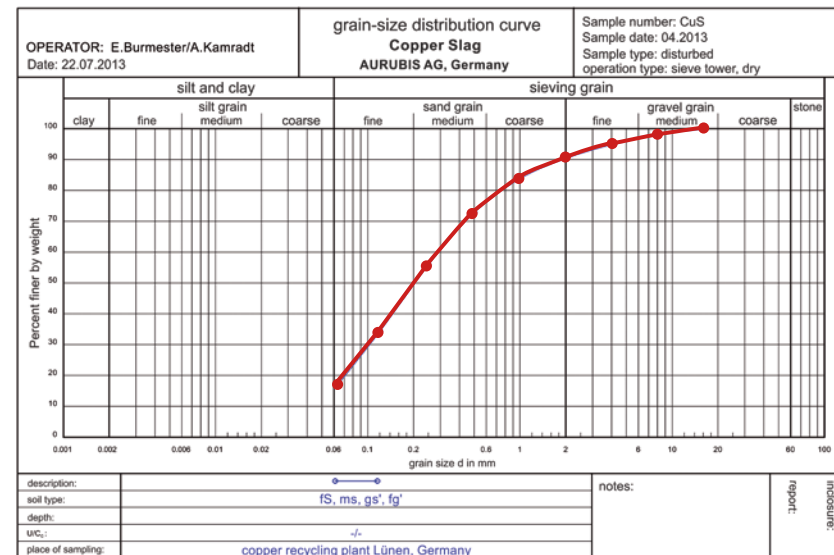
Anode smelter Cu slag from copper smelter, Aurubis AG, Lünen, Germany



Cu content [%]*



Sieve analysis



Other metals

(unsieved sample)

Fe	16.455%	As	0.103%	Sn	3.333%	Pb	2.035%
Ni	2.254%	Mo	0.102%	Sb	0.197%		
Zn	2.991%	Ag	0.003%	W	0.317%		

* Point measurements of inhomogeneous ore by mobile XRF Scanner